



Magnifiers
Product Catalog





ZEISS Magnifiers

Flexibility for many visual tasks

Sometimes the naked eye is simply not enough to distinguish small details. Magnifiers are converging lenses that allow the eye to move closer to the object to be observed. Whether for reading or doing handicraft work – magnifiers can provide excellent support.

ZEISS Magnifiers

Overview

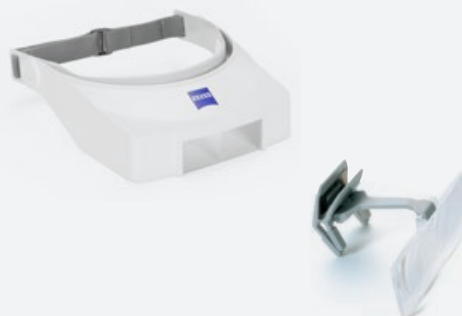
The following diagram shows an overview of the magnifiers available and provides a short description of the products.

Aplanatic-achromatic pocket magnifiers



- *No distortion or chromatic aberration*
- *Available as single pocket magnifier with 24 D or 40 D*
- *Available as double pocket magnifier with 36 D (combination of 12 D and 24 D)*
- *Comes standard with antireflective coating*

Head-worn loupe L / LC



- *Head-worn loupes with binocular magnifying component*
- *Available with 4 D or 6 D*
- *Hands remain free to perform the task at hand*

ZEISS Aplanatic-achromatic Pocket Magnifiers

In many visual tasks where precise imaging is a must, particularly in industry, research and the handicrafts, aplanatic-achromatic magnifiers are indispensable aids. Their small dimensions also make them suitable for persons with low vision, e.g. for mobile use.

The aplanatic-achromatic pocket magnifiers are marked with a dioptric power (D) which makes it possible to determine the respective magnification depending on the conditions of use.

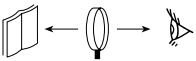
These magnifiers provide images without distortion and chromatic aberration across the entire field of view. They come standard with antireflective coating.

Swing-out magnifying optics
with antireflective coating



Housing
for protection of the
magnifying optics

Technical data

Refractive power (D)	Magnification for reference distance of 0.25 m (D/4)	Optically effective diameter	Optimal conditions of use		
			Using distance 		Field of view
24 D	6x	22 mm	35 mm	10 mm	52 mm
40 D	10x	13 mm	20 mm	10 mm	22 mm
36 D = 24 D + 12 D	9x = 6x + 3x	22 mm	25/35/80 mm	10 mm	32/52/127 mm

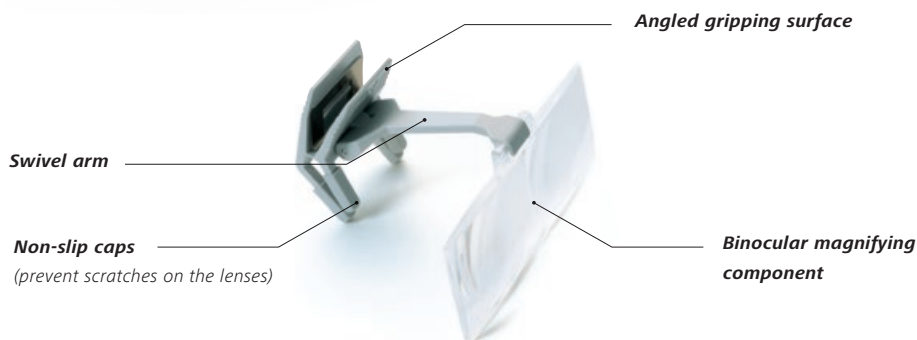
ZEISS Head-worn Loupe L / ZEISS Head-worn Loupe LC

The head-worn loupes are used in particular when low magnification suffices to perform the task at hand. The user's hands remain free.

The ZEISS Head-worn Loupe L consists of a vertically adjustable visor, closed at the sides, that prevents the entry of irritating light and can be swung out of the field of view if required.

To increase wearing comfort, the headband is fitted with an exchangeable textile pad.

The ZEISS Head-worn Loupe LC is a magnifier clip that can be attached to most prescription eyewear. The height and inclination of the magnifying component can be adjusted.



Technical data

Refractive power (D)	Optically effective diameter	Conditions of use			
		Using distance		Magnification	Field of view, binocular
4 D	40 x 30 mm	200 mm	60 mm	1.25x	83 x 100 mm
6 D	40 x 30 mm	140 mm	60 mm	1.4x	72 x 75 mm

Weight of Head-worn Loupe LC: approx. 20 g

Weight of Head-worn Loupe L: approx. 110 g

Carl Zeiss Vision GmbH

Turnstrasse 27

73430 Aalen

Germany

info.vision.de@zeiss.com

www.vision.zeiss.de